





## Sales

### Start Simple

For a simple solution to your manufacturing requirements, come to Adaptive and benefit from our PC-based manufacturing products.

Global offices, and friendly knowledgeable representatives with a wealth of experience in your sector can start you on the right path to the solution you need, using the most up-to-date and easy to use manufacturing technologies.

It's simple... join our existing customers in textiles, food and beverage, composites, motor-sport, waste-recycling, medical, automotive, aerospace and many more...



## Design

### Add Expertise

Our systems engineers have a wide knowledge of manufacturing processes and are ready to help you resolve your production challenges. We understand that it is processes and integration that drive world-class manufacturing today.

Adaptive have both hardware and software products, together with the design skills to ensure you achieve a fully-integrated factory.

If you're short of time or need a fresh look at your project, Adaptive are here to look, listen and provide.



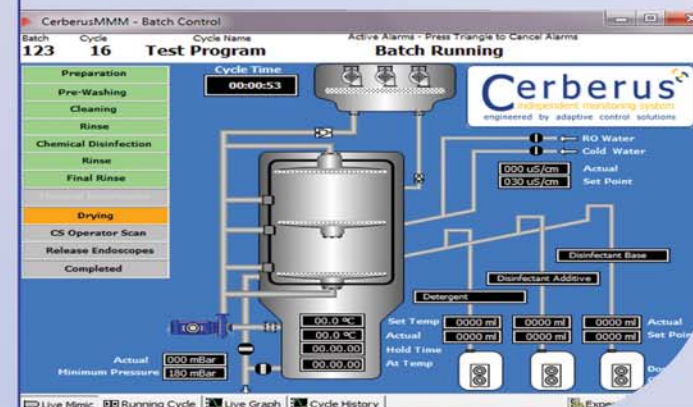
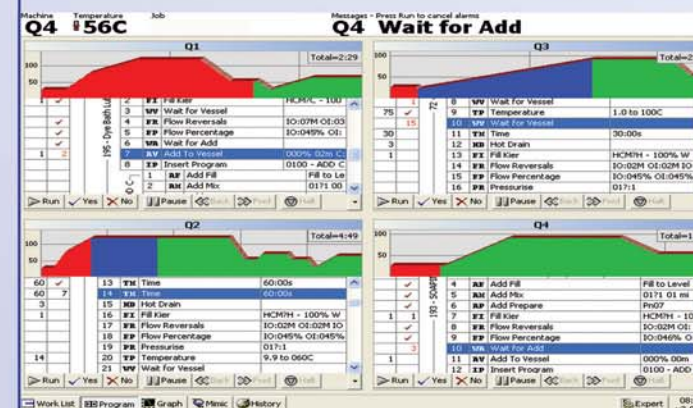
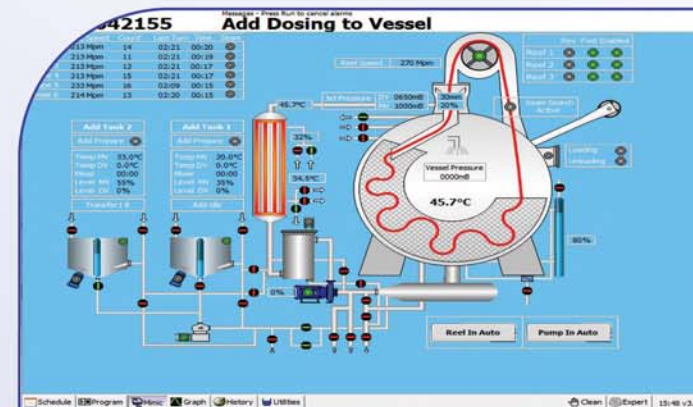
## Customer Support

### There For You

Our team of experienced technicians can help you optimise your installations for maximum productivity and reliability.

We have support staff worldwide offering both high quality service and customer support. Service contracts are available post installation at all levels of response.

We offer training courses in all our product areas through our local offices, or if you prefer we'll come to you.



## Process Control

### It's a PC

If you are looking for a replacement for your old proprietary controls then our PC-based solutions could be just what you're looking for.

With touch-screen technology and powerful software control, Adaptive controllers are used all around the world and can jump-start any industry.

Rapidly control and monitor your machine with a local real-time schedule of work, complete list of running steps, live graph, animated machine-mimic and historical graphs stored for many years.

Integration is easy, with network links to Excel, Access, corporate networks and of course with the Adaptive Plant Explorer central control system.

With a PC at the front, and many choices of PLC or I/O hardware behind, you'll be getting a system that is truly ready for whatever the future brings.

For all your batch and continuous requirements, an Adaptive machine controller does it better, quicker and more reliably.

## Multi-Machine Control

### One Becomes Many

With Adaptive technology you can run and coordinate multiple machines from one control system.

Run the machines separately or in multiple combinations for maximum production flexibility.

Smart-coupling and joint-scheduling are standard features on these controllers, making it simple for supervisors and operators to run whatever batch sizes are needed.

Multi-machine can also be used with laboratory machines to help bring down the unit cost while keeping all the features of a dedicated system.

## Independent Monitoring

### Second Opinion

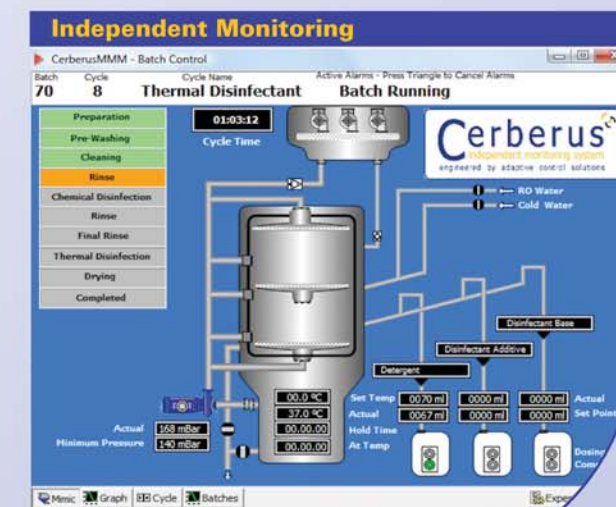
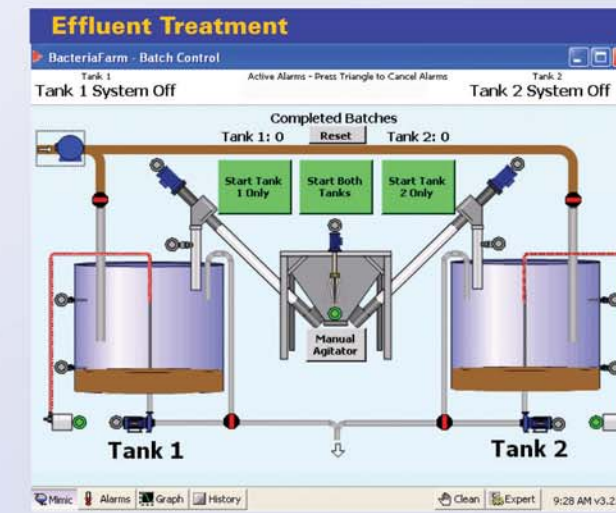
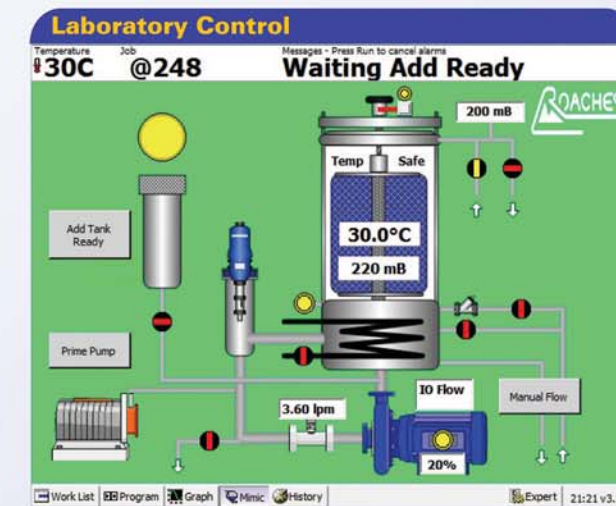
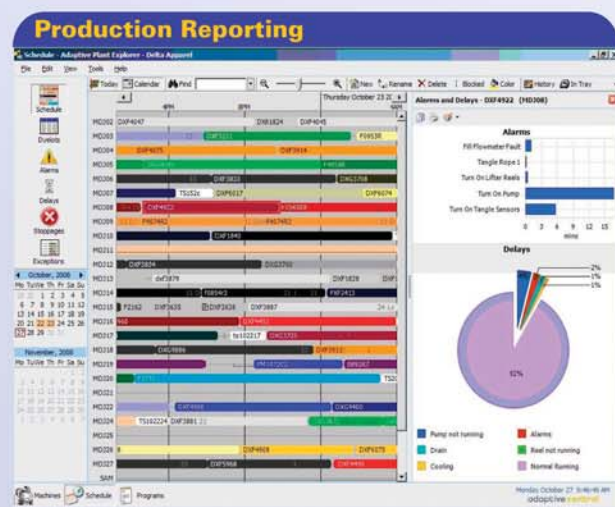
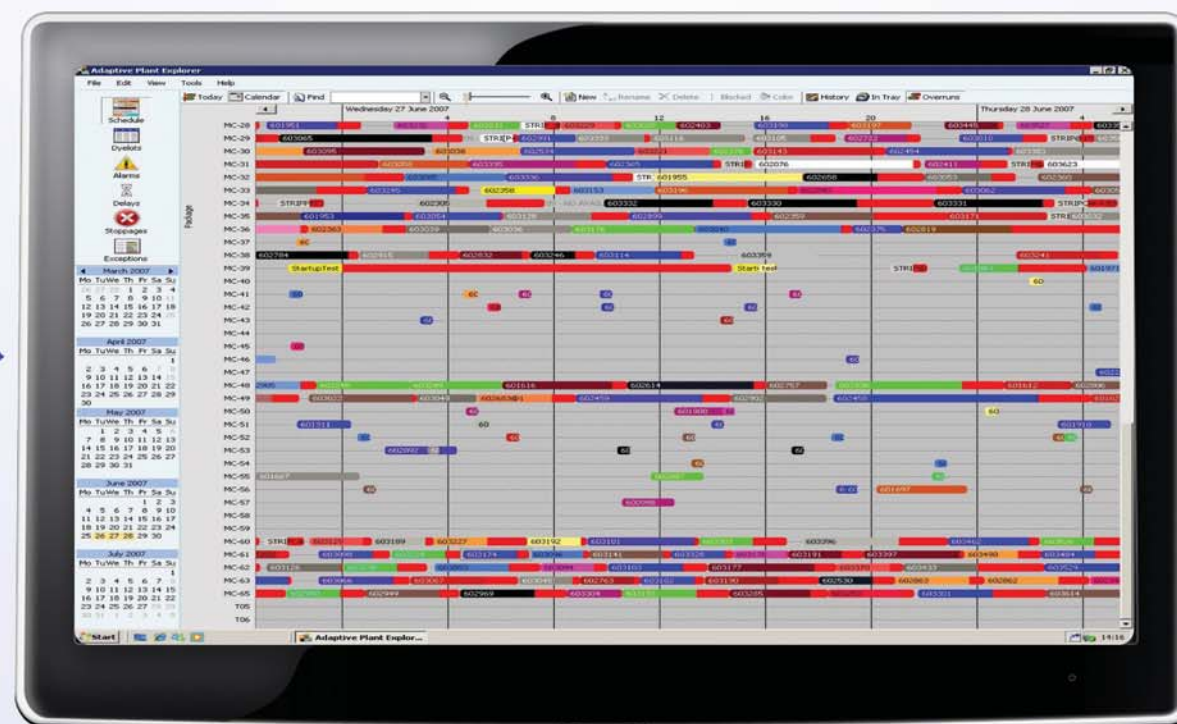
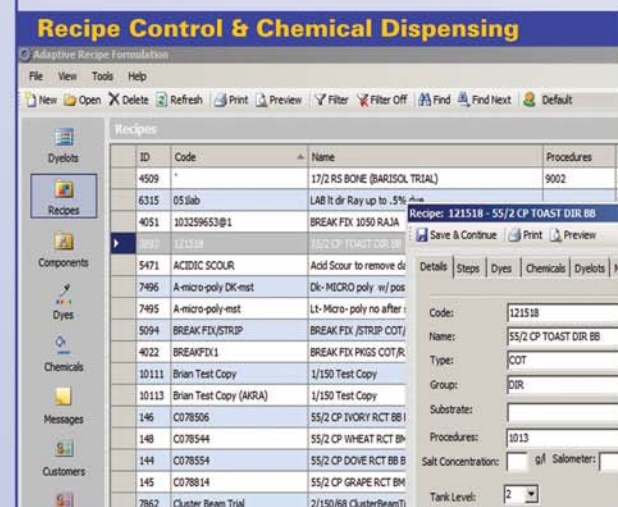
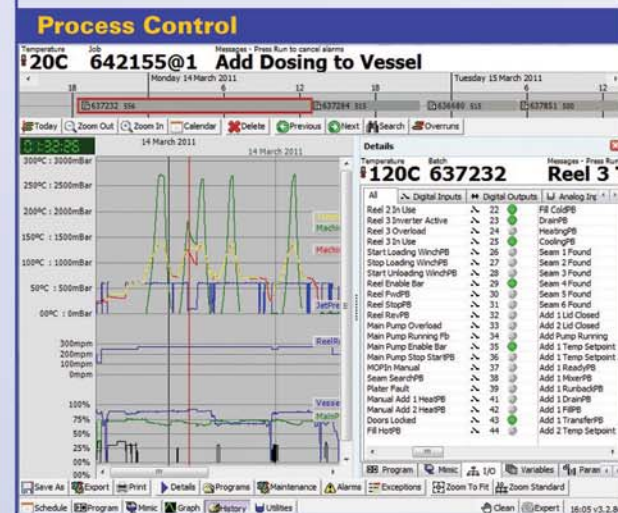
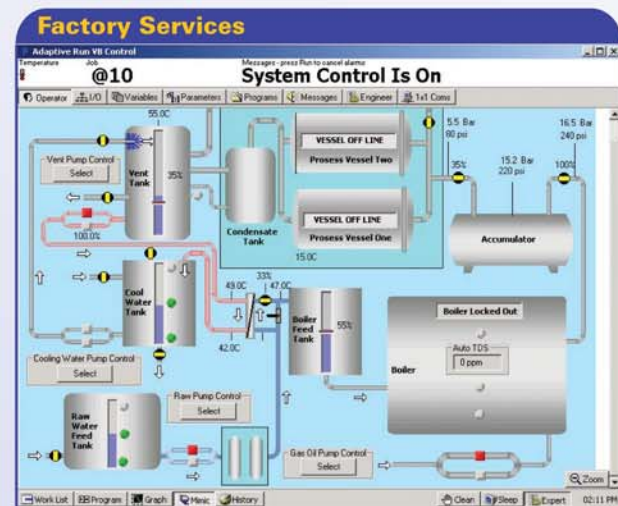
If you have a system already installed and need an extra level of independent monitoring, our Cerberus system has what you need.

Whether for legislative reasons or simply for data-analysis, Cerberus records multiple data points in fast real-time for a permanent independent record of the process.

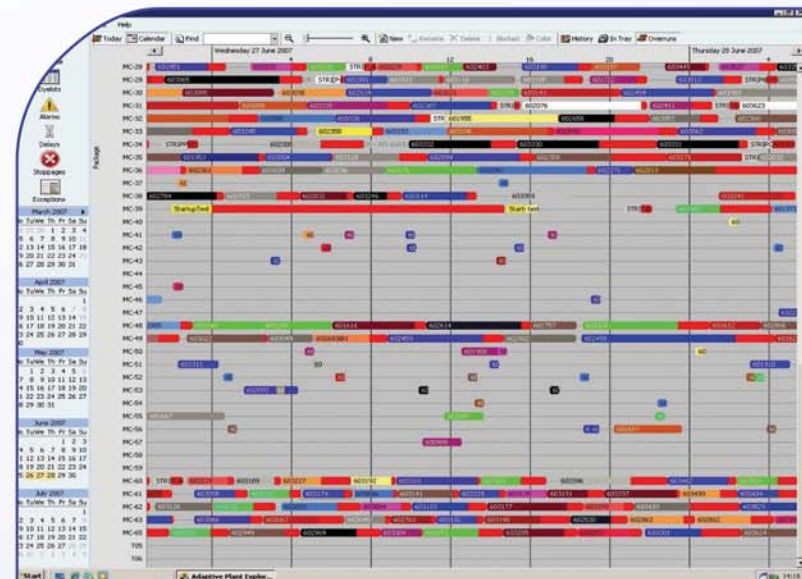
Example uses include medical sterilization and disinfection, food-storage and refrigeration, water and effluent treatment, factory energy usage, tank-farms, leakage detection, and boilers.



# Take control and see everything







## Central Control System

### The Original Plant Explorer

Our widely emulated Plant Explorer central control system sets the standard around the world for powerful features and ease of use.

Plant Explorer pulls together the control and monitoring information from all around your factory, and stores it in a standard Microsoft SQL Server database.

Also featuring simple but powerful data display screens, Plant Explorer often uses graphics rather than text to present factory information and reports in an easy to understand way.

Compatible with multiple brands of controllers, this is our flagship product and has more features than we can list here – so ask for a demo!



### adaptive have an app for it!

#### Pick up your Phone

When you need information fast, you'll be glad to download our free Plant Explorer app.

Connect to your factory Wi-Fi or make a VPN connection when on the move, and you'll soon be online to the same great screens you get on your office PC copy of Plant Explorer.

Check the progress of a batch through the factory, or find out how the machines are running today with just a few easy flicks on your own phone.

It's another great reason to choose Adaptive.



## Control System Solutions

### Quality Built In

With a dedicated electrical and pneumatic work centre, we design and build control panels for any application. All our systems are built with high quality, market-leading components and can be assembled in all types of enclosure systems and materials. Accredited with ISO9001, Adaptive will ensure quality, repeatability and timely deliveries.

### Have It Your Way

Inside our control panels the Adaptive non-proprietary concept really comes into its own. You can specify your own brand of PLC or we can suggest other cost-effective alternatives. Combined with our PC interface on the front, this means all hardware will be standard ensuring spares and support will be available from the general market-place far out into the future.

### Recycle And Save

In addition to building complete control systems, we offer a retrofit service that interfaces Adaptive technology to your existing control panels. This can be a great way to upgrade relatively new installations or to move forward when budgets are limited.

### Friends Everywhere

Adaptive have world-wide mechanical and electrical contractor partners allowing us to offer turn-key solutions for all magnitude of projects.

## Air & Fluid

### Smooth Flow

We specify and supply high quality air and fluid components at competitive prices. In addition, if you're looking for a single point of sourcing for components from hoses to pneumatic systems, why not see what we can do for you.

Adaptive have distribution arrangements and stock with most air product companies.

- Solenoid valves
- Cylinders
- Hose & Tubing
- Air preparation and air fittings
- Compressors, vacuum technology and more...

## Process Valves

### Switch To Us

Adaptive are the sole UK distributor and stockist for Valvole Hofmann - the innovative valve producers of Italy. We supply a wide range of process valves for all industrial applications, specialising in high performance stainless steel products and cost effective steam-control solutions.

- Angle Seat valves
- Steam Control Valves
- Mixing and Diverting Valves
- Ball & Butterfly Valves and more...





Agents / Distributor

**Adaptive Control Solutions Ltd**

Unit 5 Thackley Court Industrial Estate  
Thackley Old Road | Shipley | BD18 1BW | UNITED KINGDOM  
Tel: +44 (0)1274 593597 | Fax: +44 (0)1274 596319  
Email: [sales@adaptivecontrol.co.uk](mailto:sales@adaptivecontrol.co.uk) | Website: [www.adaptivecontrol.co.uk](http://www.adaptivecontrol.co.uk)

**Adaptive Control Inc**

Suite 190 | 9801 West Kinsey Avenue  
Huntersville | NC 28078 | USA  
Tel: +1 704 947 0770 | Fax: +1 704 947 6200  
Email: [sales@adaptivecontrol.com](mailto:sales@adaptivecontrol.com) | Website: [www.adaptivecontrol.com](http://www.adaptivecontrol.com)

**Adaptive Control Asia-Pacific**

LogicArt Automation Co. Ltd | 8F-7, No.16, Lane 609  
Sec.5 Chung-Shin Road | San-Chung District | New Taipei City | TAIWAN  
Phone: +886 2 2999 2899 | Fax: +886 2 2999 2893  
Email: [sales@adaptivecontrol.com](mailto:sales@adaptivecontrol.com) | Web: [www.adaptivecontrol.com](http://www.adaptivecontrol.com)